



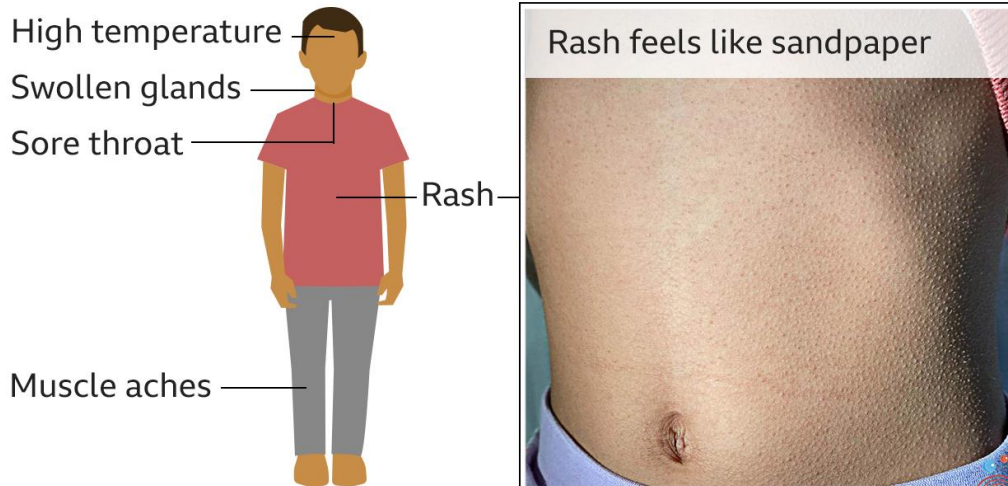
Dear Parents and Carers,

8 December: Christmas jumper day.

14 December: Christmas songs by the children for parents at 11.30am and 2.45pm. Children are encouraged to wear their Christmas jumpers and please feel free to add some tinsel or other Christmas sparkle to their outfit!

I am sure that many of you are concerned by the news of **Strep A infections** and the sad deaths of a few, but too many, children. Rest assured that if we see any symptoms on your child we will contact you immediately. As always, we are following our infection control policy in order to reduce the possible spread of infection at nursery.

Strep A: What to look for



Source: Don't Forget the Bubbles Skin Deep, BBC research



Strep A infections are not usually serious and can be treated with antibiotics. They can become serious (invasive) if the bacteria get past the body's immune defences.

Warning signs of invasive disease include:

- fever (a high temperature above 38C)
- severe muscle aches

Urgent, early medical help is then essential.

Strep A infections are highly contagious so please keep your child at home if they have symptoms. If you think your child may have any symptoms from strep A then you should speak with your doctor.

INSPIRING · LEARNING · ACHIEVING

Spending lots of time outside helps prevent infection spreading. Luckily at Guildford Nursery School, the children are able to spend much of the day outside in the fresh air.



Please support Guildford Nursery School and Family Centre on #easyfundraising. You can raise FREE donations when you shop online with over 7,000 brands. It's simple and only takes 2 minutes to sign up! **This will make a BIG difference to us.** Sign up here: [Guildford Nursery School and Family Centre Fundraising | Easyfundraising](#)

Please do contact us if you have any queries at all.

Kind regards

Sally

(Headteacher)

Dates for your diary:

15 December: **Term ends** at the usual time.

16 December: **Christmas parties**, your child will be invited to a party at:
either 9.30am-10.30am OR 11am-12pm

19 December – 4 January: **Nursery closed.**

5 January: **Children return to nursery.**

