

Dear Parents and Carers,

We are loving our ducklings:



**RED  
NOSE  
DAY**

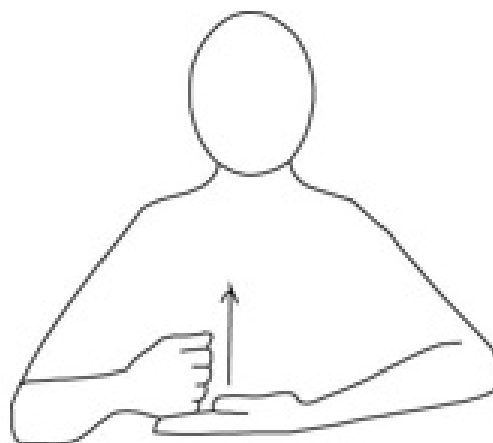
**Date: Friday 15<sup>th</sup> March**

Wear something red and please make a donation if you can.

"Comic relief partners with amazing projects and organisations to make a difference to lives of millions of people across the UK and around the world."

**Help:** A particularly useful sign to use and teach your children.

[Makaton sign of the week: Help \(youtube.com\)](https://www.youtube.com/watch?v=...)



### **The teaching of maths:**

It is great that children are able to chant the numbers 1-10 and beyond, in this way they learn the order and names of the numerals. However, chanting numbers is not the same as counting.

**Both are important.** Counting is when a child can accurately count a number of objects with 1:1 correspondence, for example they can give you 5 objects from a pile of 10.

We encourage children to understand that everything can be counted – from jumps and hops in the garden and pieces of fruit at snack time, to the number of stairs to the nappy changing unit.

For my information about how we teach maths, please see our website: [Curriculum – Guildford Nursery School and Family Centre \(quildfordnsc.surrey.sch.uk\)](https://quildfordnsc.surrey.sch.uk/curriculum)

You will also find some ideas of what you can do at home here: [Home Learning – Guildford Nursery School and Family Centre \(quildfordnsc.surrey.sch.uk\)](https://quildfordnsc.surrey.sch.uk/home-learning)

Any queries or concerns, please do not hesitate to contact me.

Kind regards

Sally (Headteacher)



### **Dates for your diary:**

**25<sup>th</sup>-27<sup>th</sup> March:** Come and play sessions in nursery for parents.

28<sup>th</sup> March: Term ends at 12pm for the Spring/Easter holiday.

Tuesday 16<sup>th</sup> April: Children return to nursery.

NB: Nursery will be closed for children on Friday 3<sup>rd</sup> May and Friday 24<sup>th</sup> May.

Saturday 18<sup>th</sup> May 10am-12pm: Froebel Festival. Come and play in nursery with your whole family, friends, neighbours.

20<sup>th</sup>-23<sup>rd</sup> May: Come and play sessions in nursery.

Friday 19<sup>th</sup> July 12pm: Summer term ends.